

From The Chairman's Desk

We want to contribute to a better tomorrow for all with a model garment factory. C&R Sweater Ltd. is fully compliant in respect to social, ethical and workplace conducts,

It ensures 'Doing the Right Things.'

Thanks to our valued customers and entire employees for being with C&R Sweater Ltd.

Thanks

Chairman



Jordane Cathala

From The Managing Director's Desk

In increasing export, creating employment and contributing to the GDP, the impact of the export oriented RMG industry is enormous in our country. Keeping those points in view, ensuring quality environment of work and sportingly embracing the global completion, our core mission is to produce world class sweaters and pullovers. We love to see our efforts would bring the image of our country and nation forward, impressively. This is the ultimate accomplishment C&R Sweater Ltd values most.

I am confident that soon Bangladesh would be emerging as the largest exporter of RMG in the global arena, and each of our garment factories would be considered safe, compliant by standards to be applauded by the global communities concerned.

Thanks

Managing Director



Moshir Rahman

Our Valuable Customer

TALLY WEIJL

 **REDSKINS**

DEELUXE^{EST. 74}

FRANSA

B. YOUNG

SMYK

PEPCO

SOYA CONCEPT

CONCEPT CLUB

Certificate of Registration



REF- ZC405744381



amfori ID -050-000391-000



ID -23939



ID -3269



ID-58951



ID-1014941-1

FACTORY

Name of the Factory	C&R SWEATER LTD.
Company type	100% Export Oriented Sweater Manufacturer
Bank Details	STANDARD BANK LIMITED Uttara Model Town Branch Latif Emporium (Level-1) , Plot#27, Road#07, Sector#03,Uttara,Dhaka-1230
Contact Person	Jordane Cathala (Chairman) Mobile: +88 01711595204 Email: contact@candrsweaterltd.com Moshiur Rahman (Managing Director) Mobile: +88 01713003540 Email :moshiur@candrsweaterltd.com
Year of Commencement of Production	2019
Turnover per year	2020 – US\$9.80 Million
Man Power	Management Division - 4 Executive, Engineers & Technicians - 7 Administration & Others - 10 Workers – 1200 (+/-)
Space Occupied	135,785 Square feet
Shipment	90-120 days - Depend on Yarn (Import or Local) / Style /Quantity
Payment Condition	100% irrevocable L/C at sight (We provide Certificate of Origin GSP Form - A, Visa against shipment for U.S.A & Canada)
Export Markets	France, Switzerland, Germany
Experience on the following brand name	TALLY WEIJL, DEELUXE, REDSKINS, SOYA CONCEPT, CONCEPT CLUB, FRANSA, SMYK, PEPKO.
Products	Any kinds of Sweater Item.



Manufacturing Feature



Design & Development

Product design & development department is one of the major features of C&R Sweater Ltd. Specialized merchandising unit source the correct yarn & trims to help develop the sample.



Sample Development

Producing presentation sample and pre-production preparations its smoothest headway into operation to ensure total quality speed in producing identical reproduction of the approved samples.

Manufacturing Feature



Knitting



Linking



Washing



C&R Sweater is capable of washing about 2,60,000 Pcs per month

Manufacturing Feature



Metal Detector



Iron



Sewing



Final Check

Product-Men

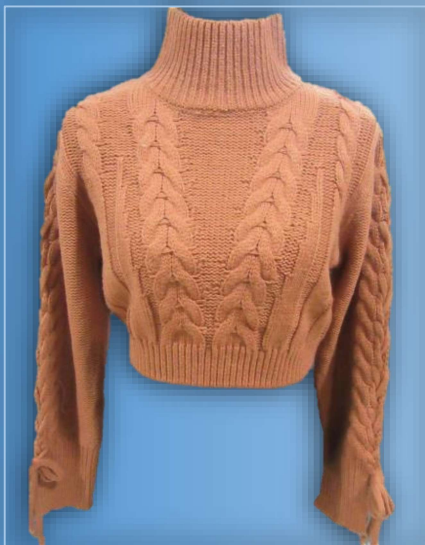
C&R Sweater produce sweaters, pullovers and cardigan using all types of yarn from sources stipulated by customers. Product range include lines for all the age and gender groups in both casual and fashion.



Product-Kids & Boys



Product-Women



List Of Machines

SL#	Machine Details	Qty.															
1	FLAT KNITTING JACQUARD MACHINE GAUGE 12GG, (7GG/ 5GG MULTI), 3.5GG	254 SET															
	<table> <tr> <th>Gauge</th><th>Quantity</th><th>Production Capacity/Per Month</th></tr> <tr> <td>12GG</td><td>152 Sets</td><td>1,02,750 pcs</td></tr> <tr> <td>7/ 5 GG Multi</td><td>90 Sets</td><td>70,250 pcs</td></tr> <tr> <td>3.5 GG</td><td>12 Sets</td><td>10,600 pcs</td></tr> <tr> <td>Total</td><td>254 Sets</td><td>183,600 pcs/Month</td></tr> </table>	Gauge	Quantity	Production Capacity/Per Month	12GG	152 Sets	1,02,750 pcs	7/ 5 GG Multi	90 Sets	70,250 pcs	3.5 GG	12 Sets	10,600 pcs	Total	254 Sets	183,600 pcs/Month	
Gauge	Quantity	Production Capacity/Per Month															
12GG	152 Sets	1,02,750 pcs															
7/ 5 GG Multi	90 Sets	70,250 pcs															
3.5 GG	12 Sets	10,600 pcs															
Total	254 Sets	183,600 pcs/Month															
2	AUTOMATIC HIGH SPEED LINKING MACHINE GAUGE 16GG, 14GG, 8GG , 6GG	280 SET															
3	ELECTRONIC AUTO WINDING MACHINE CONE TO CONE, HANKS TO CONE, VACUME CLEANER, AUTO PUNCH SYSTEM, DOUBLE WAX DEVICE	2 SET															
4	OVERLOC MACHINE	8 SET															
5	INDUSTRIAL BAR TAG	1 SET															
6	LONGSTITCH SEWING MACHINE	20 SET															
7	BUTTON HOLE MACHINE	1 SET															
8	BUTTON ATTACH MACHINE	2 SET															
9	GENERATOR(550 KVA & 100 KVA)	2 SET															
10	INDUSTRIAL BOILER CAPACITY:1000 KG+ 500KG	2 SET															
11	4 HEAD AUTO PLACKET MACHINE	10 SET															
12	INDUSTRIAL IRON (With hose)	50 SET															
13	VACUM TABLE With all standard accessories	50 SET															
14	FULL AUTOMATIC WASHING MACHINE WITH STANDARD ACCESSORIES, CAPACITY: 100 KG	3 SET															

List Of Machines

SL#	Machine Details	Qty.
15	FULL AUTOMATIC EXTRACT MACHINE WITH STANDARD ACCESSORIES, CAPACITY: 100 KG	3 SET
16	INDUSTRIAL AUTO DRYER(STEAM OPERATED) WITH STANDARD ACCESSORIES, CAPACITY: 100KG	5 SET
17	DOUBLE HEAD NEEDLE DETECTOR	1 SET
18	DUST REMOVER	1 SET
19	SEMI AUTO CARTON PACKING MACHINE	1 SET
20	PP BELT MACHINE	2 SET
21	DAMAGE PART OPENING MACHINE	6 SET
22	BRUSH CLEANER INVERTOR	2 SET

WORKING FACILITIES

- (1) Worker Payment Mode: By Cash**
- (2) Working hours: 8 hours**
- (3) Extra hour : If need we pay overtime.**
- (4) Job Satisfaction:**
 - I. Job Security**
 - II. Good Environment**
 - III. Salary & wages on time**
 - IV. Production bonus**
 - V. Good Sanitation**
 - VI. Child care facility**
 - VII. Maternity Leave**
 - VIII. Emergence Treatment facility**
 - IX. 4 month Salary after termination**
 - X. Prayer, Canteen & Dining Room**
 - XI. Group Insurance**
 - XII. Subsidy on Sanitary Napkin**
- (5) Under 18 years Recruitment strictly prohibited.**
- (6) Enjoy weekly holiday.**
- (7) Enjoy all kind of govt. holiday.**
- (8) Yearly working performance bonus.**
- (9) Yearly picnic.**