

Synergy Fashions Ltd.
 10000 Highway 101, Unit 10, Mississauga, Ontario L4V 1V9
 Tel: (905) 875-1111 Fax: (905) 875-1112
 Email: info@synergyfashions.com Website: www.synergyfashions.com

PRODUCT RANGE: We produce / manufacture of all kind of Sweater, Cardigan, JUMPER, Pullovers & Vest, using all type of Yarn from any source specified by the customer, as per compliance regulations recommended by EU & USA. Quality and on time delivery is our main target.





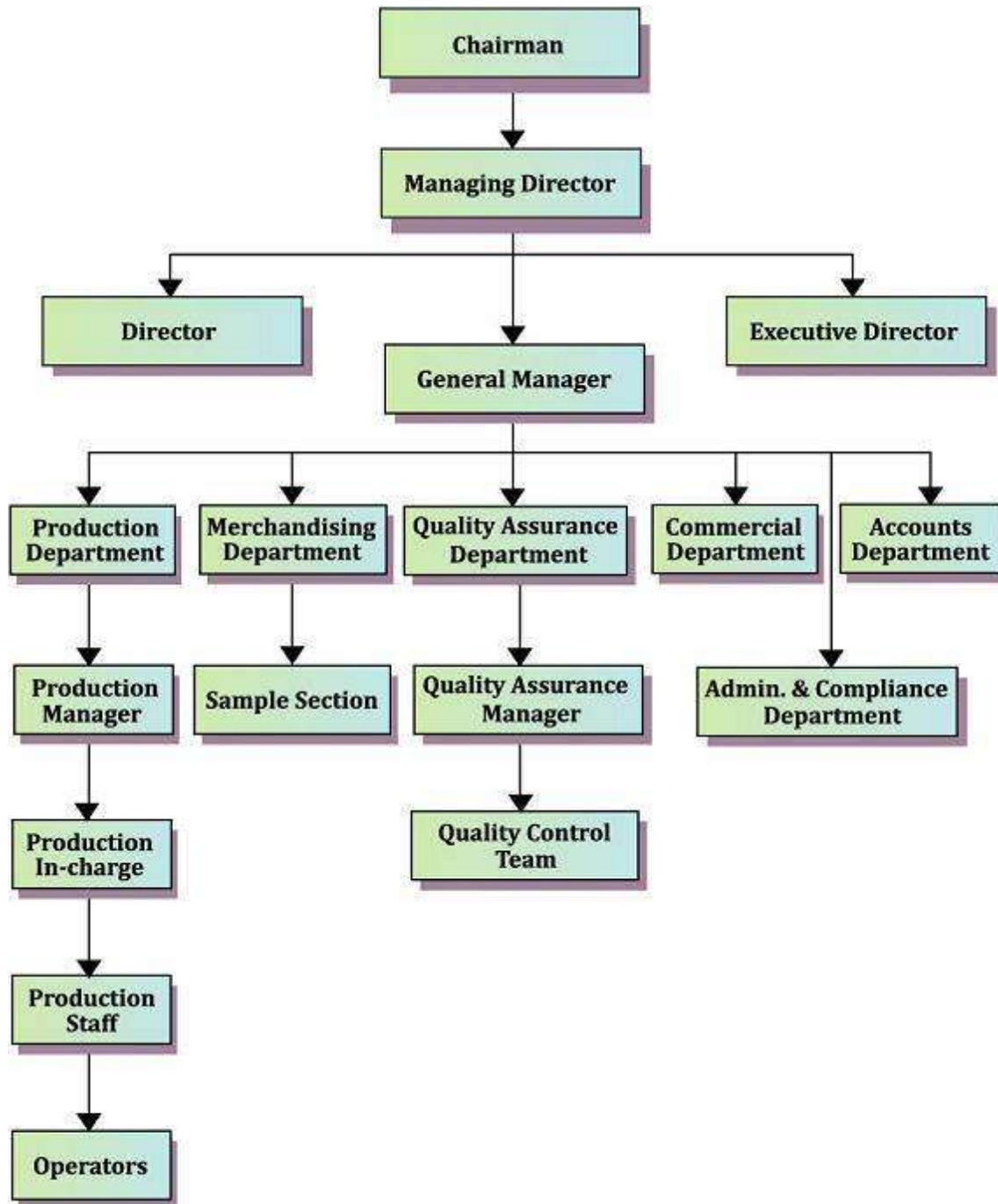
Factory Details:

Primary Business Type	:	Manufacturer / Exporter/ 100% Export Oriented Unit.
Bank Details	:	Southeast Bank Limited. Principal Branch, 1 Dilkusha C/A, Dhaka-1000, Bangladesh.
Swift	:	SEBDBDDHSPB
A/C No	:	000211100048683
Major Market	:	CAPRI SRL (ALCOTT), PIAZZA ITALIA S.P.A, STS GROUP SRL, DST GROUP SRL, SORBINO S.R.L, SONNYBONO - ITALY, CORA, TDM, LA HALLE - FRANCH, MINOYA, CROSS PLUS, HONEYS - JAPAN, HEGLER FASHION GMBH, TEXTILE KARNTNER - GERMANY. TIFFOSI - PORTUGAL, VENCA - SPAIN, COCCODRILLO - POLAND RD INTERNATIONAL – CANADA, NAUTICA & MICHEAL KOR'S-USA.
Number of Employee	:	850
Membership	:	BGMEA
Certificate	:	Social (BSCI & SEDEX)
Production Capacity	:	1,20,000 per month
Production Lead Time	:	90 days for local yarn and 120 days for imported yarn
Minimum Order Quantity	:	300 dozens per style
Nature of Business	:	All kind of Sweaters
Raw Materials Use	:	Cotton, Acrylic, Woolen, and Blend Yarn
Export Zone	:	Chittagong Port

Machine Details:

SL	PARTICULARS	BRAND	QUANTITY
01	Computerized Jacquard Machine	Running Tiger	70 Sets (12Gauge)
02	Computerized Jacquard Machine	Running Tiger	40 Sets (5-7 Multi Gauge)
03	Computerized Jacquard Machine	Running Tiger	10 Sets (3 Gauge)
04	Automatic Strap Knitting Machine	Flying Tiger	06 Sets
05	Dial Linking Machine	Flying Tiger	6GG/8GG/14GG/16GG = 185 Sets
06	Metal Detector	Hashima, Japan	01 Set
07	Button Testing Solution	Hashima, Japan	01 Set
08	Extractors	Flying Tiger	02 Sets
09	Washing Machine	Flying Tiger	03 Sets
10	Dryer	Flying Tiger	03 Sets
11	Boiler	Full tone	01 Sets
12	Plain Machine	Brother	12 Sets
13	Over Lock Machine	Brother	08 Sets
14	Flat Lock Machine	Brother	02 Sets
15	Button Stitch	Juki	02 Sets
16	Button Hole	Juki	02 Sets
17	Bartek Machine	Brother	05 Sets
18	Eyelet Machine	Takin	01 Set
19	Light Check	Local	08 Sets
20	Hit Cutter Machine	Local	01 Set
21	Winding Machine	Flying Tiger	10 Sets
22	Generator	Perkins	02 Sets
23	Iron	Dragon	26 Sets

Company Organogram:



KNITTING SECTION:



A wide-angle photograph of a busy textile factory floor. Numerous workers, both men and women, are seated at long tables, each equipped with a sewing machine. They are focused on their work, with some looking down at their machines and others glancing towards the camera. The factory is brightly lit by overhead fluorescent lights. In the background, a blue sign with white text reads "LINKING SECTION". The workers are wearing various colored shirts, and some are wearing traditional Indian clothing like saris. The overall atmosphere is one of industriousness and large-scale manufacturing.





A large, brightly lit garment factory floor. Numerous women, dressed in colorful saris and headscarves, are working at long white tables. They are engaged in various tasks, including sewing and handling fabric. The room features high ceilings with industrial fans and bright fluorescent lighting. Stacks of fabric and finished garments are visible on the tables. A green sign on the wall reads "Kashmiri Garment Manufacturing".

A photograph of a kitchen area with two large industrial machines. On the left is a large stainless steel pot on a stand. On the right is a large industrial mixer or grinder. A sign on the wall reads "WASH SECTION".





Thank You